



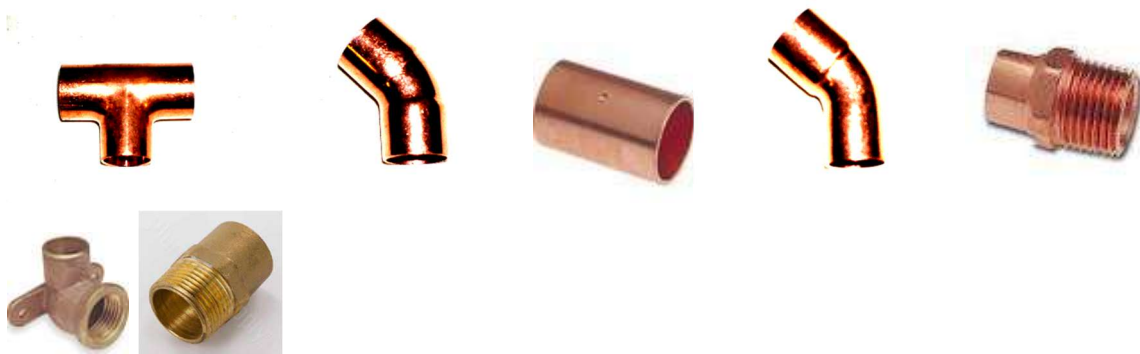
Friedman & Dorrans Sales, Inc.

STOCK ITEMS

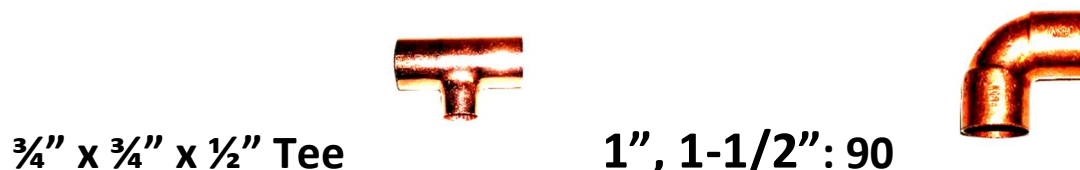


Copper Pressure

½": 90 (#37304), Street 90 (#37354), 45 (#37204), Street 45 (#37254), Tee (#37404), male (#37804) & female adapter (#37704), caps (#37504), couplings (#37004), C x FIP drop ear 90 (#25399), cast brass male (#25804), cast brass female (#25704)



¾": 90 (#37305), Street 90 (#37355), 45 (#37205), Street 45 (#37255), Tee (#37405), male (#37805) & female adapter (#37705), caps (#37505), couplings (#37005), cast brass male (#25805), cast brass female (#25705)



¾" x ¾" x ½" Tee

1", 1-1/2": 90

(#37429)

(#37306, #37308)

(#37430) – ¾" x ½" x ¾" Tee

(#37439) – 1" x 1" x ½" Tee

(#37431) – ¾" x ½" x ½" Tee

(#25706, #25806) – 1" female & male cast brass sweat adapters

Copper DWV



1-1/2, 2" 45/90 and street

(#22318, #22319, #22218, #22219, #22358, #22359, #22258, #22259), Long Sweep 90 (#22378, #22379)



2" Wye (#22509), 1-1/2" P-Trap (#22678), 2" P-Trap (#22679), 2" Tee (#22409), 2" Soil Adapter (#22845), 2" x 1-1/2" DWV Tee (#22419), 2" Female Adapter (#22709), 2" Male Adapter (#22809), 2" Flush Cleanout (#22659), 2" Coupling (#22009), 1-1/2" Tee (#22408), 1-1/2" (MIP/sweat x 1-1/2" O.D.) marvel connector (#28638), 2" Utility Tee (#22469)



½": 90 (#47304), Street 90 (#47354), 45 (#47204), Street 45 (#47254), Tee (#47404), male (#47804) & female adapter (#47704), caps (#47504), couplings (#47004), repair couplings (#47074), CAST MIP/FIP Adapters (#47854, 47754)

¾": 90 (#47305), Street 90 (#47355), 45 (#47205), Street 45 (#47255), Tee (#47405), male (#47805) & female adapter (#47705), caps (#47505), couplings (#47005), repair couplings (#47075), CAST MIP/FIP Adapters (#47855, 47755)

1": 90 (#47306), Street 90 (#47356), 45 (#47206), Street 45 (#47256), Tee (#47406), male (#47806) & female adapter (#47706), caps (#47506), couplings (#47006), repair couplings (#47076), CAST MIP/FIP Adapters (#47856, 47756)

Reducing: ¾" x ½" couplings (#47023), ¾" x ½" tees (#47429), ¾" x ½" x 3/4" tees (#47430), ¾" x ½" x ½" tees (#47431), 1-1/2" x 1" x 1" tees (#47482), 3" x 1" tee (#47553), 3" x ¾" tee (#47554)

1-1/4": 90 (#47307), Street 90 (#47357), 45 (#47207), Street 45 (#47257), Tee (#47407), male (#47807) & female adapter (#47707), caps (#47507), couplings (#47007)

1-1/2": 90 (#47308), Street 90 (#47358), 45 (#47208), Street 45 (#47258), Tee (#47408), male (#47808) & female adapter (#47708), caps (#47508), couplings (#47008), repair coupling (#47078)

2": 90 (#47309), Street 90 (#47359), 45 (#47209), Street 45 (#47259), Tee (#47409), male (#47809) & female adapter (#47709), caps (#47509), couplings (#47009), repair coupling (#47079)

2-1/2": 90 (#47310), Street 90 (#47360), 45 (#47210), Street 45 (#47260), Tee (#47410), couplings (#47010), repair coupling (#47080)

3": 90 (#47311), Street 90 (#47361), 45 (#47211), Street 45 (#47261), Tee (#47411), couplings (#47011), repair coupling (#47081)

4": 90 (#47312), Street 90 (#47362), 45 (#47212), Street 45 (#47262), Tee (#47412), couplings (#47012), 4" x 9" 125# companion flange (#47612)

ALL PRESS FITTING REDUCERS TO MAKE UP FITTINGS ½" – 4"



**CARBON PRESS GAS FITTINGS HNBR &
CARBON WATER EPDM**

½": 90 (#46304), Street 90 (#46354), 45 (#46204), Street 45 (#46254), Tee (#46404), male (#46804) & female adapter (#46704), caps (#46504), couplings (#46004), repair couplings (#46074), unions (#46104)

¾": 90 (#46305), Street 90 (#46355), 45 (#46205), Street 45 (#46255), Tee (#46405), male (#46805) & female adapter (#46705), caps (#46505), couplings (#46005), repair couplings (#46075), unions (#46105)

1": 90 (#46306), Street 90 (#46356), 45 (#46206), Street 45 (#46256), Tee (#46406), male (#46806) & female adapter (#46706), caps (#46506), couplings (#46006), repair couplings (#46076), unions (#46106)

Reducing: ¾" x ½" couplings (#46023), ¾" x ½" tees (#46429)

1-1/4": 90 (#46307), Street 90 (#46357), 45 (#46207), Street 45 (#46257), Tee (#46407), male (#46807) & female adapter (#46707), caps (#46507), couplings (#46007)

1-1/2": 90 (#46308), Street 90 (#46358), 45 (#46208), Street 45 (#46258), Tee (#46408), male (#46808) & female adapter (#46708), caps (#46508), couplings (#46008), repair coupling (#46078)

2": 90 (#46309), Street 90 (#46359), 45 (#46209), Street 45 (#46259), Tee (#46409), male (#46809) & female adapter (#46709), caps (#46509), couplings (#46009), repair coupling (#46079)

ALL PRESS FITTING REDUCERS TO MAKE UP FITTINGS ½" – 2"

½" – 2" CARBON PRESS WATER MALE ADAPTERS

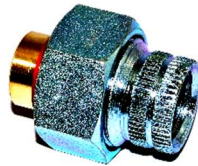
Gas Cocks



$\frac{1}{2}$ " , $\frac{3}{4}$ "

(#13504, #13505)

Dielectric Unions



$\frac{3}{4}$ " , 1" , 2" , $\frac{3}{4}$ " , 1" press

Ball Valves



$\frac{1}{2}$ " – 2" C x C fullport (#13204, #13205, #13206, #13207, #13208, #13209)

$\frac{1}{2}$ " – 4" Press Ball Valves (#13514 - #13522)

$\frac{1}{2}$ " – 2" IPS Ball Valves (#13104 - #13109)

$\frac{1}{2}$ " – 1" IPS Ball Valves w/drain (13124 – 13126)



XH No-Hub Couplings 4" – (18972)



"AA" size water hammer arrestor – $\frac{1}{2}$ " MIP – (31204)

BACKSTOP®



NON-ASME

12-A101C (2.1 gallon)

12-A102C (4.5 gallon)

12-TWH2 (w/air valve)

12-H15 (2 gallon hydronic)

12-H30 (4.8 gallon hydronic)

12-H60 (6.3 gallon hydronic)

12-H90 (14 gallon hydronic)

DRCY8848QVSCE – ¾" M x M x 48" quick disconnect
commercial gas install kit

ASME

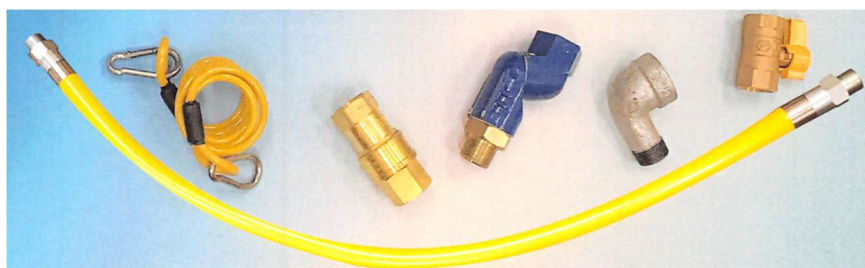
12-ACB30 (8 gallon ASME)

12-ACB45 (12 gallon ASME)

12-ACB80 (21 gallon ASME)

12-ACB140 (37 gallon ASME)

12-ACB170 (44 gallon ASME)



BrassCraft®

Stops

Compression inlet: G2CR09X C, G2CR14X C, G2CR19X C



PLB100X P, PLB111X P, SCR19X

Iron Pipe inlet: G2R15X C, G2R17X C



Rigid Supply Tubes

1-12A C, 1-20A C, 1-12DL C, 1-20DL C



1-12DE C, 1-20DE C

BrassCraft®

Speedi-Plumb Flexible Supply Tubes

PLS1-12A F, PLS1-16A F, PLS1-20A F, PLS1-9DL F, PLS1-12DL F,
PLS1-20DL, PLS1-12KC, PLS1-20KC, PLS1-12DW F, PLS1-20DW F



Speedi Adapter (#63-6-8WX CD) 3/8" O.D. x 1/2" O.D.



TWV3SRX – SWEAT X IPS TANKLESS SERVICE VALVE KIT PRV





flow, stop and go®



Spring-Flo® is the original three-screen slotted aerator. Trusted by plumbers since 1938, Spring-Flo® aerators provide a smooth stream. With a unique air intake through side slots. Spring-Flo® aerators maximize aeration, reduce splash, and disassemble for easy and repeated screen cleaning.

Spring-Flo® aerators are marketed exclusively for the repair part contractor through plumbing wholesalers and plumbing specialty distributors. Spring-Flo® aerators meet or exceed all applicable standards. Complies with low lead standard.

**Each Deal contains 24 convenient tubes of
6 Spring-Flo® faucet aerators.**

Part # 15 0200 7



Perlator® 2.2 gpm is the faucet aerator most used by faucet manufacturers. This true OEM quality product is now available to the Professional Trade at the most affordable price.

Perlator® 2.2 gpm Dual Threads fits most faucets and is easily recognized to its patented Honeycomb® outlet construction and its color-coded red dome screen. It delivers the highest flow rate allowed by Law in the US and Canada (2.2 gpm max at 60 psi). Perlator® is also available in 1.5 gpm (green dome) for water conservation projects. Complies with low lead standard. Each pack contains 24 tubes of 6

aerators, **Part # 10 9200 7** **Part # 10 6200 7**



flow, stop and go®



For Ultra Low-Flow .5gpm applications, featuring pressure compensating flow regulator that maintains a constant flow regardless of variations in line pressure thereby optimizing system performance and comfort of use at all pressures. Complies with low lead standard.

**Each Deal contains 24 convenient tubes of
6 PCA® spray faucet aerators**

Part # 10 2200 7



Order Part # 11 9170 5 Cache keys with metal clip



PCA® Care® Small Female Chicago Thread with 10349 Adapter
2.2gpm – chrome finish – laminar flow pattern (E3) – splash free crystal-clear stream.

Order Part Number 10 4920 5 (1/bag)



PCA® Perlator® Small Male Chicago (E12) 2.2gpm – chrome finish –
laminar flow pattern – splash free crystal-clear stream

Order Part Number 11 4700 5 (1/bag)



flow, stop and go®



PCA® Perlator® Small Male Chicago (E12) 2.2gpm – chrome finish – laminar flow pattern – splash free crystal-clear stream, vandal-proof

Order Part Number 11 4740 5 (1/bag)

Champion Pump



- Sump Pump: Model #CPS3V-11 (1/3hp, piggyback switch)
 - Sump Pump: Model #CPES5V-11 (1/2hp)
 - Sewage Ejector Pump: Model CPEW5V-11 (1/2hp)
 - Sewage Ejector Pump: Model #CPW5V-11 (1/2hp)
- Residential Grinder Pump: Model #CPG1011V-2 (1hp, 115 volts, 2" bolt-on discharge adapter, vertical float switch - replaces a standard sewage ejector pump – grinds material to avoid pump jams)
 - 20-foot power cords and switches for grinders

Champion Pump



- 24-1515-SL00: 1-1/2" silent rubber check valve
- 24-2020-SL00: 2" silent rubber check valve



- BACK UP SUMP SYSTEMS

**BBUP900W – 1/3HP PRIMARY PUMP WITH INVERTER,
BATTERY BOX, CABLES, CHECK VALVE & FLOAT**



Champion Pump



CPACE – 1/2HP TRANSFER PUMP

#27925 – 100 AMP HOUR 12 VOLT AGM BATTERY





Neutra-Safe®
CONDENSATE NEUTRALIZERS

**CN2-220V – vertical/horizontal mount neutralizer
for appliance input to 220,000 BTU**

CN2-300C – neutralizer to 300,000 BTU

CN4B-600C – neutralizer to 600,000 BTU

CN4B-850C – neutralizer to 850,000 BTU

CN4B-1200C – neutralizer to 1,200,000 BTU

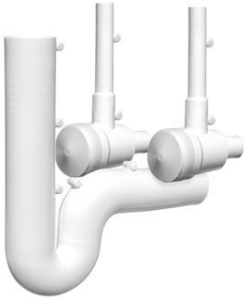
CN4B-2000C – neutralizer to 2,000,000 BTU

CN5TR – tray style neutralizer to 5,000,000 BTU

22RCK-S – recharge kit for CN2-220V



X4333 - PRO-EXTREME 3-PIECE P-TRAP & SUPPLY LINES COVER KIT WHITE (10-box)



2003W – HANDY SHIELD MAXX 3-PIECE P-TRAP & SUPPLY LINES COVER KIT WHITE (50-box)



X4114 – PRO-EXTREME WHITE OFFSET COVER ONLY



2003B – HANDY SHIELD MAXX 3-PIECE P-TRAP & SUPPLY LINES COVER KIT BLACK





Rheem ThermaForce™ Tankless 199K BTU Water Heater RTGH-L-199i

RUUD ThermaForce™ Tankless 199K BTU Water heater RUTGH-L-199i



Rheem ThermaForce™ Boiler 15K – 95K BTU RHBH-L99i

Rheem ThermaForce™ Boiler 20K – 125K BTU RHBH-L120i

Rheem ThermaForce™ Combi Boiler 28.3K – 199K BTU RCBH-L199i

Rheem Thermaforce FT-Series Boiler 30.6K – 199K BTU RHBH-FT199



Rheem G100-200 – commercial 100 gallon 199K BTU NG spark ignition atmospheric vent water heater



Rheem GHE100SU-200 – commercial 100 gallon 199K BTU NG ultra high efficiency water heater



Rheem GHE119SU-500A – commercial 119 gallon 499K BTU NG ultra high efficiency water heater





Friedman & Dorrans Sales, Inc.



STOCKED ITEMS AT FRIEDMAN & DORRANS

FlowCo™

SPEX2412 – 120V 1-PH, 2.4KW 20 AMP

SPEX3012 – 120V 1-PH, 3.0KW 25 AMP

SPEX3208 – 208V 1-PH, 3.0KW 15 AMP

SPEX3277 - 277V 1-PH, 3.0KW 11AMP

SPEX3512 – 120V 1-PH, 3.5KW 29 AMP

SPEX4208 – 208V 1-PH, 4.1KW 20AMP

SPEX4277 – 277V 1-PH, 4.1KW 11AMP

SPEX8208 - 208V 1-PH, 8.3KW 40AMP

SPEX35 – 240V 1-PH, 3.5KW 15AMP

SPEX48 - 240V 1-PH, 4.8KW 20AMP

SPEX55 - 240V 1-PH, 5.5KW 23AMP

SPEX60 – 240V 1-PH, 6.0KW 22AMP

SPEX80 – 277V 1-PH, 8.0KW 29AMP





Friedman & Dorrans Sales, Inc.



STOCKED ITEMS AT FRIEDMAN & DORRANS

LavAdvantage™

SPEX012240T – 240V 1-PH, 11.5KW 48AMP, Thermostatic

SPEX2412T – 120V 1-PH, 2.4KW 20 AMP, Thermostatic

SPEX3012T – 120V 1=PH, 3KW 25AMP, Thermostatic

SPEX3512T – 120V 1-PH, 3.5KW 29 AMP, Thermostatic

SPEX35T – 240V 1-PH, 3.5KW 15AMP, Thermostatic

SPEX48T - 240V 1-PH, 4.8KW 20AMP, Thermostatic

SPEX55T - 240V 1-PH, 5.5KW 23AMP, Thermostatic

SPEX60T - 277V 1-PH, 6.0KW 22AMP, Thermostatic

SPEX65T - 240V 1-PH, 6.5KW 27AMP, Thermostatic

SPEX75T - 240V 1-PH, 7.5KW 31AMP, Thermostatic

SPEX3208T – 208V 1-PH, 3.0KW 14AMP, Thermostatic

SPEX3277T – 277V 1-PH, 3.0KW 11AMP, Thermostatic

SPEX4208T - 208V 1-PH, 4.1KW 20AMP, Thermostatic

SPEX4277T - 277V 1-PH, 4.1KW 15AMP, Thermostatic

SPEX8208T - 208V 1-PH, 8.3KW 40AMP, Thermostatic

SPEX80T - 277V 1-PH, 8KW 29AMP, Thermostatic

SPEX95T - 240V 1-PH, 9.5KW 40AMP, Thermostatic

SPEX100T – 277V 1-PH, 10KW 36AMP, Thermostatic





Friedman & Dorrans Sales, Inc.



STOCKED ITEMS AT FRIEDMAN & DORRANS

MiniTank™

EMT1 – 1 Gallon, 1.4KW, 12 AMP

EMT2.5 – 2.5 Gallon, 1.4KW, 12 AMP

EMT4 – 4 Gallon, 1.4KW, 12 AMP

EMT6 – 6 Gallon, 1.4KW, 12 AMP



STOCKED ITEMS AT FRIEDMAN & DORRANS

HomeAdvantage II™

HA008240 – 240V, 8KW, 33AMP

HA011240 – 240V, 8KW, 46AMP

HA013240 – 240V, 13KW, 54AMP

HA018240 – 240V, 18KW, 75AMP

HA024240 – 240V, 24KW, 100AMP

HA027240 – 240V, 27KW, 113AMP

HA036240 – 240V, 36KW, 150AMP



AutoBooster™

HATB00724 – 240V, 7.2KW, 30AMP





Friedman & Dorrans Sales, Inc.



STOCKED ITEMS AT FRIEDMAN & DORRANS

AccuMix II™

AM004120T – 120V, 3.5KW, 29AMP

AM005240T – 240V, 4.8KW, 20AMP

AM007240T – 240V, 6.5KW, 40AMP

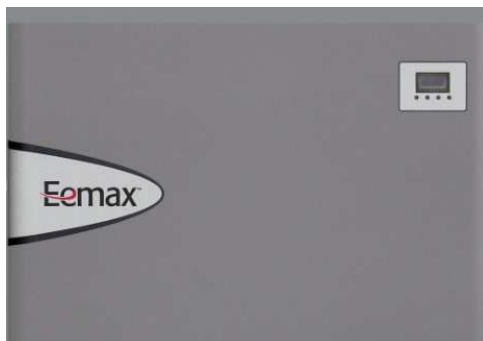
AM010240T - 240V, 9.5KW, 40AMP

AM012240T - 240V, 11.5KW, 48AMP



SpecAdvantage

AP072480 EFD – 480 V, 72KW, 3-PHASE (customer sign-off required)



VARIOUS ELEMENTS, CIRCUIT BOARDS, RELAYS ALSO

**Call your Friedman & Dorrans salesman for pricing
or to place an order.**

**Warehouse Address: 1140 Larkin Drive
Wheeling, IL 60090**

Ph: 847-459-8412 Fax: 847-459-8437



Need it quick...No Problem.... Same Day is O.K.

New items in Blue